



Providing accurate and reliable professional land surveying Services at competitive rates



## About Gledaki Services Limited

### Company Overview:

Gledaki Services Limited is a reputable survey company based in Nairobi, Kenya. We specialize in providing a comprehensive range of surveying services, including cadastral, planning, topographical, aerial, and hydrographic surveys. Additionally, we offer equipment rental services for surveys and provide printing solutions for bulk CAD drawings. With a strong commitment to accuracy, efficiency, and customer satisfaction, Gledaki Services Limited has earned a trusted reputation in the surveying industry.

Gledaki Services limited was established in 2018. Over the years, we have had opportunities to serve different players in the Kenyan economy, including contract in sectors such as construction, oil, gas, and energy, Governmental Organizations, Non-governmental Organizations, Surveying companies, Agriculture companies as well as learning institutions.

Our reputation can be affirmed by the diverse geospatial products and services we offer in the provision of measurement solutions for Engineering, Surveying, Agriculture, Construction, Outdoor Navigation, GIS, and Mapping industries from world-known and reliable manufacturers.

Our team of experts is satisfactory and field trained to handle each of the products and therefore we can provide our clients with exceptional service, support and training programs.

As part of our continued innovation, we have ventured into drone mapping services. To this effect, we have acquired a fleet of drones that are fully registered with KCAA (Kenya Civil Aviation Authority) & we have a licensed drone pilot and we are KCAA certified to carry out commercial drone missions.

Providing accurate and reliable professional land surveying Services at competitive rates





## Our Mission

Gledaki Services Limited: Providing exceptional survey solutions for informed decision-making. We strive to empower organizations worldwide with accurate data, fostering growth and success.



## Our Vision

To be the industry leader, revolutionizing surveys with cutting-edge technology and delivering actionable insights.

### SERVICES OFFERED:

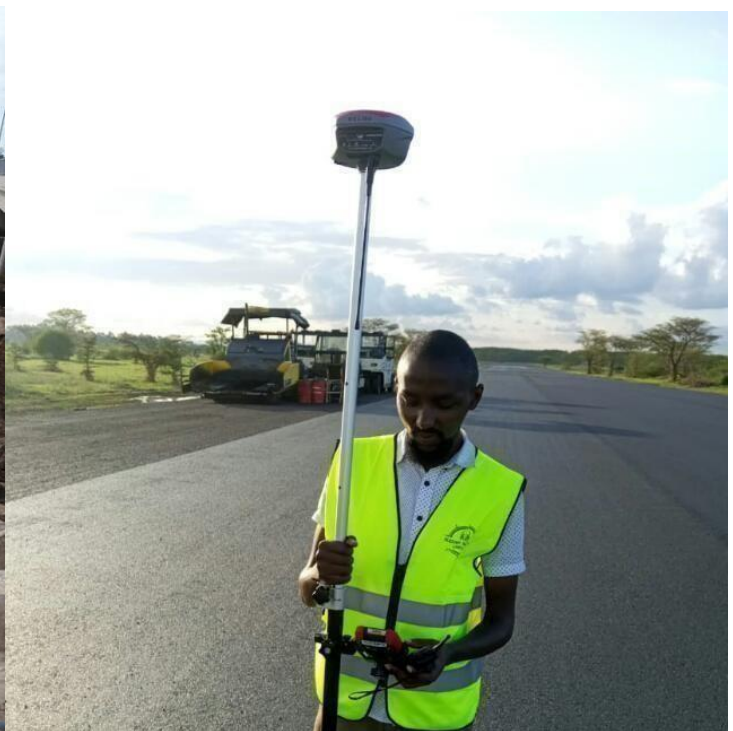
## 1. CADASTRAL SURVEY:

We conduct accurate and reliable cadastral surveys, which involve mapping and defining property boundaries, determining land ownership, and providing legal documentation required for property transactions, subdivisions, or developments.



## 2. Engineering Survey:

Engineering surveys assist in land development projects by providing essential data such as site analysis, topography, infrastructure, and environmental factors. This information aids in making informed decisions during the planning and design stages.





### 3.0 Topographical Survey

We conduct detailed topographical surveys to map the natural and man-made features of a particular area. Our surveys capture accurate information on the contours, elevations, vegetation, and other physical characteristics of the land, enabling effective project planning and design.





### 3.1 Aerial Survey

Using advanced aerial imaging technology, we capture high-resolution aerial photographs and create orthophotos and digital elevation models. Aerial surveys are ideal for large-scale projects, infrastructure planning, and environment assessments.

DJI MATRICE 300 RTK with L1



DJI MATRICE 350 with L2



Aerial survey of Chania Boys High



Aerial survey of Weverly Estate Kamiti

## Table 1: DJI Matrice 300 RTK Specifications

Weight	Approx. 6.3kg (With One Gimbal)
Max. Transmitting distance	8km
Max. Flight time	55 min
Dimensions	810 * 670 * 430 mm
Max. Payload	2.7 kg
Max. Speed	82 km/h

## Table 2: DJI Zenmuse L1 Specifications

Dimensions	152 * 110 * 169 mm
Weight	930 + 10 g
Maximum Measurement Distance	450 m at 80% reflectivity, 190 m at 10% reflectivity
Recording Speed	Single return: max. 240,000 points/s; Multiple return: max. 480,000 points/s
System Accuracy	Horizontal: 10 cm per 50 m; Vertical: 5 cm per 50 m
Distance Measurement Accuracy	3 cm per 100 m
Beam Divergence	0.28° (Vertical) × 0.03° (Horizontal)
Maximum Registered Returns	3
RGB camera sensor size	1 in
RGB camera effective pixels	20 MP (5472 × 3078)



## 3.2 Aerial Drone Survey Deliverables

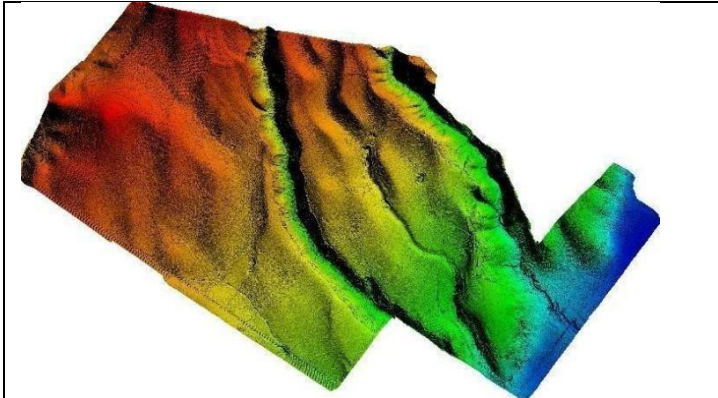


Fig. 10: Digital Elevation Models

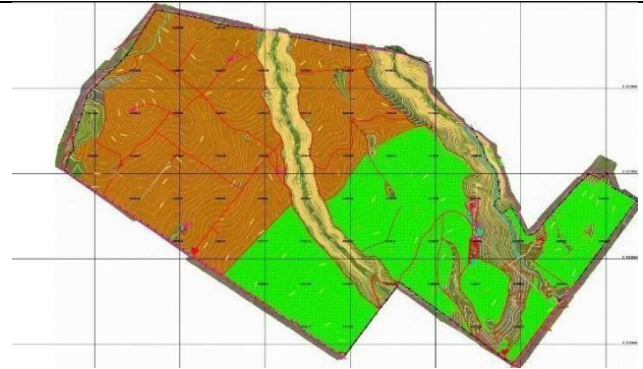


Fig. 11: Contour Map



Fig. 12: Orthomosaic

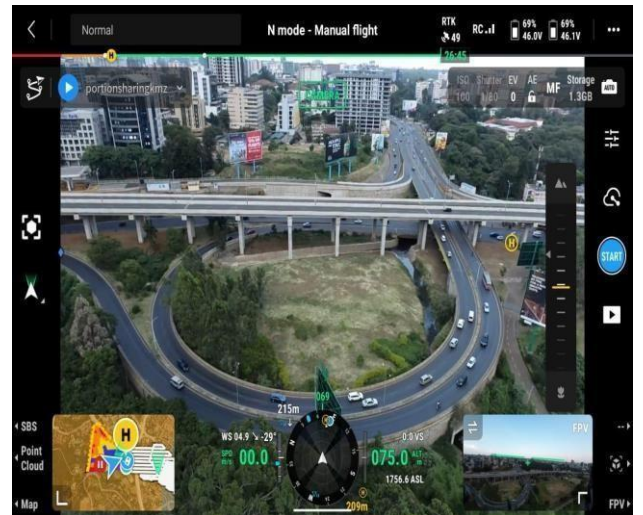


Fig. 13: Flight Route FPV Images

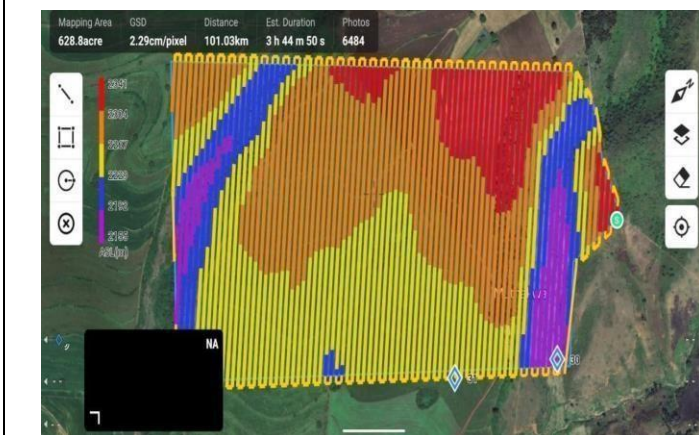


Fig. 14: Flight path



Fig. 15: Flight Route FPV Images



#### 4. Hydrographic/bathmetric Survey:

Gledaki Services Limited specializes in hydrographic surveys, which involve mapping and measuring bodies of water, such as rivers, lakes, and coastlines. Our precise hydrographic data assists in coastal zone management, port and harbor design, and environmental monitoring.



# SPECIFICATIONS

Physical	
Hull dimension (L x W x H)	1.2 m x 0.75 m x 0.3 m
Material	Macromolecule polyester carbon fiber
Weight (w/o instrument and battery)	9 kg
Maximum payload	30 kg
Anti-wave & Wind	3 <sup>rd</sup> wind level and 2 <sup>nd</sup> wave level
Hull design	Triple-hull vessel
Water proof	IP65
Draft	10 cm
Indicator light	Two-color light (Display satellite and positioning status)
Video	360° omnidirectional video
Auto-return	Auto-return while low battery or signal loss
Power	
Type	Electric
Propeller type	Brushless DC
Direction control	Veering without steering engine
Maximum motor power	700 W
Maximum motor speed	7,000 rpm
Li-ion battery capacity	4 x 40,000 mAh, 18 V 2 x 15,000 mAh, 18 V
Battery endurance	2 x 2 hours @ 2 m/s (running on 2 battery sets)
Maximum speed	5 m/s
Communication	
Data communication	Network bridge: 1 km and 4G: unlimited
R/C communication	2.4 GHz
Remote control range	1 km
SIM Card slot	Nano SIM
UHF radio	Standard Internal Rx: 410 - 470 MHz Transmit power: 0.5 W Protocol: CHC, Transparent, TT450, 3AS Satel Link rate: 9,600 bps to 19,200 bps
Data formats	RTCM2.x, RTCM3.x, CMR input HCN, HRC, RINEX2.11, 3.02 NMEA 0183 output NTRIP Client, NTRIP Caster
Integrated 4G modem	LTE FDD: B1/B3/B5/B8 LTE TDD: B38/B39/B40/B41 WCDMA: B1/B8 TD-SCDMA: B34/B39 CDMA: BC0 GSM: 900/1,800 MHz

Interface	
Interface	2 x RJ45 port 2 x RS232 serial port 1 x RS485 serial port 1 x PPS
Navigation mode	Manual or Auto-Pilot
Water proof of master control	IP67
Data storage	Local multi-sessions and FTP push
Positioning	
Satellite system	BDS B1/B2, GPS L1/L2, GLONASS L1/L2, Galileo E1/E5, SBAS, QZSS
Channel	432
Single point position (RMS)	Horizontal: 1.5 m Vertical: 2.5 m
SBAS Positioning accuracy	Horizontal: 0.5 m Vertical: 0.85 m
DGNSS positioning accuracy	Horizontal: 0.4 m + 1 ppm Vertical: 0.85 m + 1 ppm
RTK Positioning accuracy	Horizontal: ±8 mm + 1 ppm Vertical: ±15 mm + 1 ppm
Heading accuracy	0.2° @ 1 m baseline
Inertial navigation accuracy	6 %/h
D230 Single Beam Echo Sounder	
Data type	CHCGD <sup>™</sup> , NMEA SDDPT/SDDBT, original waveform
Weight	1.1 kg
Sounding range	0.15 m to 200 m
Sounding accuracy	±0.01 m + 0.1% x D (D is the depth of water)
Resolution	0.01 m
Frequency	200 KHz
Beam angle	6.5° ± 1°
Supply voltage	10-30 V DC/ 220 V AC
Software	
Hydro Survey	Data collection and post-processing, coordinate conversion
Auto Planner	Path planning, autonomous navigation, hull parameter control, multi-angle video display



\* Specifications are subject to change without notice.  
(1) CHCGD is CHCNAV format.



## 5. Agricultural Drones

Gledaki Services Limited is proud to offer professional Drone spraying services to cater to the diverse needs of our clients. As a reputable company specializing in advanced technological solutions, we have leveraged the power of drones to revolutionize the field of agricultural spraying. Our commitment to excellence, innovation, and sustainability has enabled us to provide efficient and effective crop spraying services.

Agricultural drones have a wide range of applications, including precision agriculture, effective distribution of weed control and fertilizers, and optimizing field management. These applications lead to various benefits such as reduced operational expenses, enhanced crop quality, and increased yield rates.

DJI AGRAS T50



## 6. Equipment Rental:

We offer a wide range of surveying equipment for rent, including total stations, GPS receivers, laser scanners, and drones. Our well-maintained and calibrated equipment ensures accurate data collection and optimal performance for your surveying needs.

## 7. Printing, Scanning and photocopying of Bulk CAD Drawings:

Our company provides efficient printing services for bulk CAD drawings. Whether you require large-scale map prints, site plans, or other CAD drawings, we deliver high-quality prints promptly and cost-effectively.

## 8.0. Training

### 8.1 Civil 3D Training:

Our Civil 3D Training program is perfect for individuals looking to learn the fundamentals or enhance their existing skills in computer-aided design (CAD). We train professionals in the following disciplines; architecture, engineering, designers and planners, our experienced instructors will guide you through the intricacies of Autocad software. You will learn how to create and modify 2D and 3D drawings, utilize drafting tools efficiently, and collaborate effectively with project teams.

For those involved in civil engineering and infrastructure projects, our Civil 3D training offers a comprehensive understanding of this powerful software. From designing roads, highways, and land development projects to analyzing surfaces and creating accurate construction documentation, our course will equip you with the skills to tackle real-world challenges. Our instructors will cover topics such as creating surface, alignment, profile, corridor, assembly, sample lines and section views then Modelling



## 8.2 GIS Training:

Geographic Information Systems (GIS) play a vital role in managing and analyzing spatial data. Our GIS training program focuses on the use of industry-leading software, enabling you to explore, interpret, and visualize geographical data effectively. You will learn how to create maps, perform spatial analysis, geo-reference data, and utilize GIS in various applications, including urban planning, environmental management, and asset tracking.

## 8.3 Equipment usage training:

We train surveyors and others in related fields of survey on how to use survey equipment and data processing.

# OUR PROJECTS

Over the years we have had opportunities to serve different players in the country and neighboring countries. This including contract in sectors such as construction, oil, gas, and energy, Governmental Organizations, Non-governmental Organizations, Surveying companies, Agriculture companies as well as learning institutions. Here are some selected projects we have undertaken;

## PROJECTS IN PICTORIAL



Topographical Survey Mukurwe-Ini TTI



Inspection Of Makupa Bridge



DBM Survey At Northland AERODROME



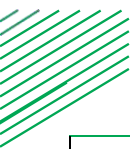
Aerial Survey Of Chania Boys High

Here are some selected projects we have undertaken;

PROJECT NAME	CLIENT NAME	SCOPE
TOPOGRAPHICAL SURVEY OF TVET & TTI INSTITUTIONS (funded by Government of Kenya)	DAMASERVICES LTD	MAPPING OF TVET & TTI INSTITUTION
MAUMAU ROAD(MURANGA SECTION)	CASS CONSULTANTS	STATIC SURVEY & TOPOGRAPHICAL SURVEY OF 120KM ROAD NETWORK
PROPOSED SEWER LINE of VIOMART TRADING LTD	VIOMART TRADING LTD	TOPOGRAPHICAL SURVEY
KIU KENDA SOCIETY road network planning	KIU KENDA SOCIETY	TOPOGRAPHICAL SURVEY AND AERIAL MAPPING
PROPOSED SEWER LINE of BRIKEN EAST AFRICA LTD at Dagoretti corner	BRIKEN EAST AFRICA LTD	TOPOGRAPHICAL SURVEYS
PROPOSED SUBATI AERODROME, TAXI WAY AND HANGER(MTITO WA NDEI)	SUBATI GROUP LTD	TOPOGRAPHICAL SURVEY & SUPERVISION DURING CONSTRUCTION
PROPOSED DAWIDA AERODROME(VOI)	IZERA RANCH LTD	TOPOGRAPHICAL SURVEY DURING CONSTRUCTION
PROPOSED NORTHLAND AERODROME, TAXI WAY AND HANGER (RUIRU)	NORTHLAND DEVELOPMENT LTD	TOPOGRAPHICAL SURVEY & SUPERVISION DURING CONSTRUCTION
UPGRADE OF SMALL SCALE TOWN IN KENYA BY IFAD IN MAUA TOWN	MANGATI.B. PATEL LTD	TOPOGRAPHICAL SURVEYS & SETTING OUT OF 24KM WATER PIPELINE DN600 & WATER TREATMENT PLANT
PROPOSED SEWERLINE & TREATMENT PLANT OF AFFORDABLE HOUSING IN BUXTON- MOMBASA	COUNTY GOVERNMENT OF MOMBASA	TOPOGRAPHICAL SURVEY & SUPERVISION DURING CONSTRUCTION

*Providing accurate and reliable professional land surveying Services at competitive rates*





PROJECT NAME	CLIENT NAME	SCOPE
REHABILITATION OF MWATATE TAVETA ROAD A23 UPTO BITUMEN LEVEL	KENHA	STATIC SURVEY, TOPOGRAPHICAL SURVEY HEIGHTING& SUPERVISION DURING CONSTRUCTION
CONSTRUCTION OF NAIVASHA ICD-LONGONOT STATION NEW MGR LINKLINE	KENYARAILWAY CORPORATION	STATIC SURVEY, TOPOGRAPHICAL SURVEY HEIGHTING& SUPERVISION DURING CONSTRUCTION
THE METREGAUGE COMMUTER RAIL IN MOMBASA	KENYARAILWAY CORPORATION	STATIC SURVEY, TOPOGRAPHICAL SURVEY HEIGHTING& SUPERVISION DURING CONSTRUCTION
UPGRADE OF THIKA GREENS PHASE 3 ESTATE FEEDER ROAD	THIKAGREENS DEVELOPER	STATIC SURVEY, TOPOGRAPHICAL SURVEY HEIGHTING
CONSTRUCTION OF FOOD PROCESSING FACTORY IN GILGIL BARRACKS	GOVERNMENT OF KENYA	STATIC SURVEY,TOPOGRAPHICAL SURVEY HEIGHTING
DESIGN OF ACCESS ROAD DECELERATION AND ACCELERATION LANE OF KISUMU POLYTECHNIC FROM KISUMU BUSIA ROAD	THEKISUMUNATIONAL POLYTECHNIC	STATIC SURVEY , TOPOGRAPHICAL SURVEY HEIGHTING
UPGRADE TO BITUMEN STANDARDS OF BUTERE TTI ACCESS ROAD FROM MAIN ROAD	BUTERE TTI	STATIC SURVEY TOPOGRAPHICAL SURVEY HEIGHTING
SLEEPING WARRIOR METER GAUGE RAILWAY (MGR) AERIAL SURVEY	MUMBI LIMITED	PLANNING, PRELIMINAY, ROUTING AND DESIGN 33KM
SLEEPING WARRIOR PROPOSED WATER ROUTE, AERIAL MAPPING	MUMBI LIMITED	PLANNING, PRELIMINARY ROUTING AND DESIGN (43KM)
SLEEPING WARRIOR SPECIAL ECONOMIC ZONE (SEZ) AERIAL MAPPING	MUMBI LIMITED	PLANNING AND DRAINAGE (4,500ACRES)
NAIROBI RIVER CORRIDOR MAPPING (MWIKI TO KANGEMI)	NAIROBI WATER AND SEWERANGE COMPANY	AERIAL MAPPING AND TOPOGRAPHICAL SURVEY 47KM)
DONGO KUNDU SPECIAL ECONOMIC ZONE (SEZ)	KENYA PORT AUTHORITY	AERIAL MAPPING AND SETTING OUT OF ROAD NETWORK (3,500ACRES)
KENYA PORT AUTHORITY (KPA) AERIAL MAPPING	KENYA PORT AUTHORITY	DRAINAGEANDMAPP NG (2,500ACRES)

At Gledaki Services Limited, we pride ourselves on our highly skilled and experienced surveying team. Our professional utilize state-of-the-art equipment and adhere to industry best practices to deliver accurate and reliable survey in solutions. We strive to exceed client expectations, working closely with them to understand their specific requirements and provide customized services.

To learn more about our services or discuss your surveying needs, please contact us using the provided contact information. We look forward to serving you and contributing to the success of your projects.



#### **GLEDAKI SERVICES LTD**

Season Kasarani – Mwiki Road Next to DO's Office.  
P.o Box 44865-00100 GPO Nairobi  
Tel: +254 715189865 / +254 724 090 291  
Email: [gledakiservicesltd@gmail.com](mailto:gledakiservicesltd@gmail.com)  
Website: [www.gledakiserviceslimited.co.ke](http://www.gledakiserviceslimited.co.ke)  
Deals in: (Cadastral, Planning, and topographical, aerial, hydrographic survey, hiring of survey instruments & printing of bulk CAD drawings.





## Location:

Our company is conveniently located in Seasons Kasarani. Along Kasarani-Mwiki Road, next to the District Officer's (DO) office. The central location allows us to serve clients not only in Nairobi but also throughout Kenya. We are easily accessible, providing a seamless experience for our clients who wish to visit our office.

## Contact Information:

Postal Address: P.O. Box 44865-00100 GPO  
Nairobi, Kenya

Email: [info@gledakiserviceslimited.co.ke](mailto:info@gledakiserviceslimited.co.ke)  
Website: [www.gledakiserviceslimited.co.ke](http://www.gledakiserviceslimited.co.ke)  
Phone: +254 715189865 or +254 724090291